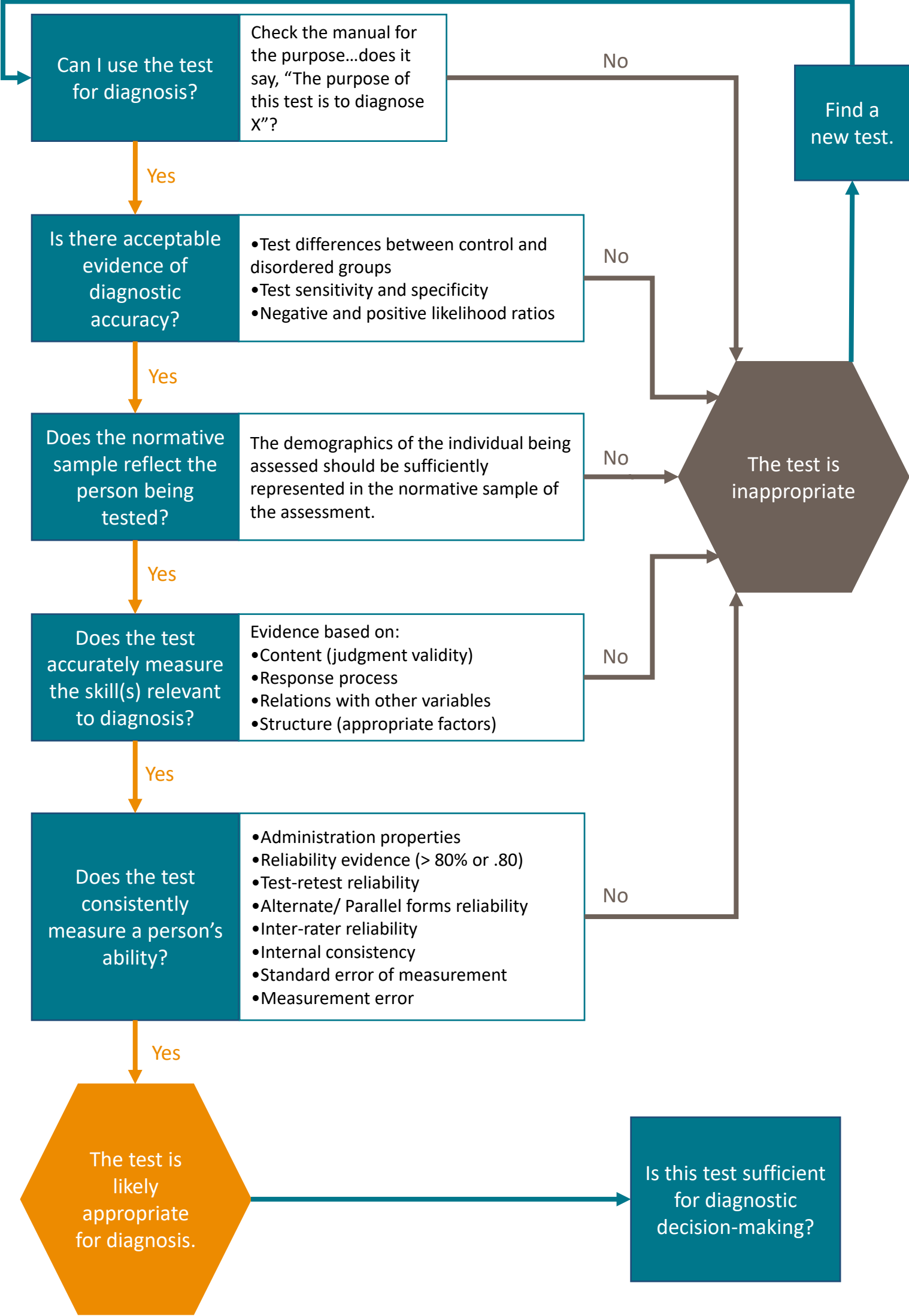


# Diagnostic Decision-Making Tree



Created by Meghan M. Davidson and the ASHA CIRISP Committee based on Daub et al. (2021):  
Daub, O., Cunningham, B.J., Bagatto, M.P., Johnson, A.M., Kowk, E.Y., Smyth, R.E., & Oram Cardy, J. Adopting a conceptual validity framework for testing in speech-language pathology. *American Journal of Speech-Language Pathology*, 30(4), 1894-1908. [https://doi.org/10.1044/2021\\_AJSLP-20-00032](https://doi.org/10.1044/2021_AJSLP-20-00032)

## Recommended Articles

Bossuyt, P. M., Reitsma, J. B., Bruns, D. E., Gatsonis, C. A., Glasziou, P. P., Irwig, L. M., ... & Lijmer, J. G. (2003). The STARD statement for reporting studies of diagnostic accuracy: Explanation and elaboration. *Annals of Internal Medicine*, 138(1), W1-12.

Bossuyt, P. M., Reitsma, J. B., Bruns, D. E., Gatsonis, C. A., Glasziou, P. P., Irwig, L., ... & STARD Group. (2015). STARD 2015: An updated list of essential items for reporting diagnostic accuracy studies. *Radiology*, 277(3), 826-832.

Daub, O., Cunningham, B. J., Bagatto, M. P., Johnson, A. M., Kwok, E. Y., Smyth, R. E., & Cardy, J. O. (2021). Adopting a conceptual validity framework for testing in speech-language pathology. *American Journal of Speech-Language Pathology*, 30(4), 1894-1908.

Nitido, H., & Plante, E. (2020). Diagnosis of developmental language disorder in research studies. *Journal of Speech, Language, and Hearing Research*, 63(8), 2777-2788.

Shahmahmood, T. M., Jalaie, S., Soleymani, Z., Haresabadi, F., & Nemat, P. (2016). A systematic review on diagnostic procedures for specific language impairment: The sensitivity and specificity issues. *Journal of Research in Medical Sciences*, 21(1), 67-82.

Vermiglio, A. J. (2014). On the clinical entity in audiology: (Central) auditory processing and speech recognition in noise disorders. *Journal of the American Academy of Audiology*, 25(09), 904-917.